

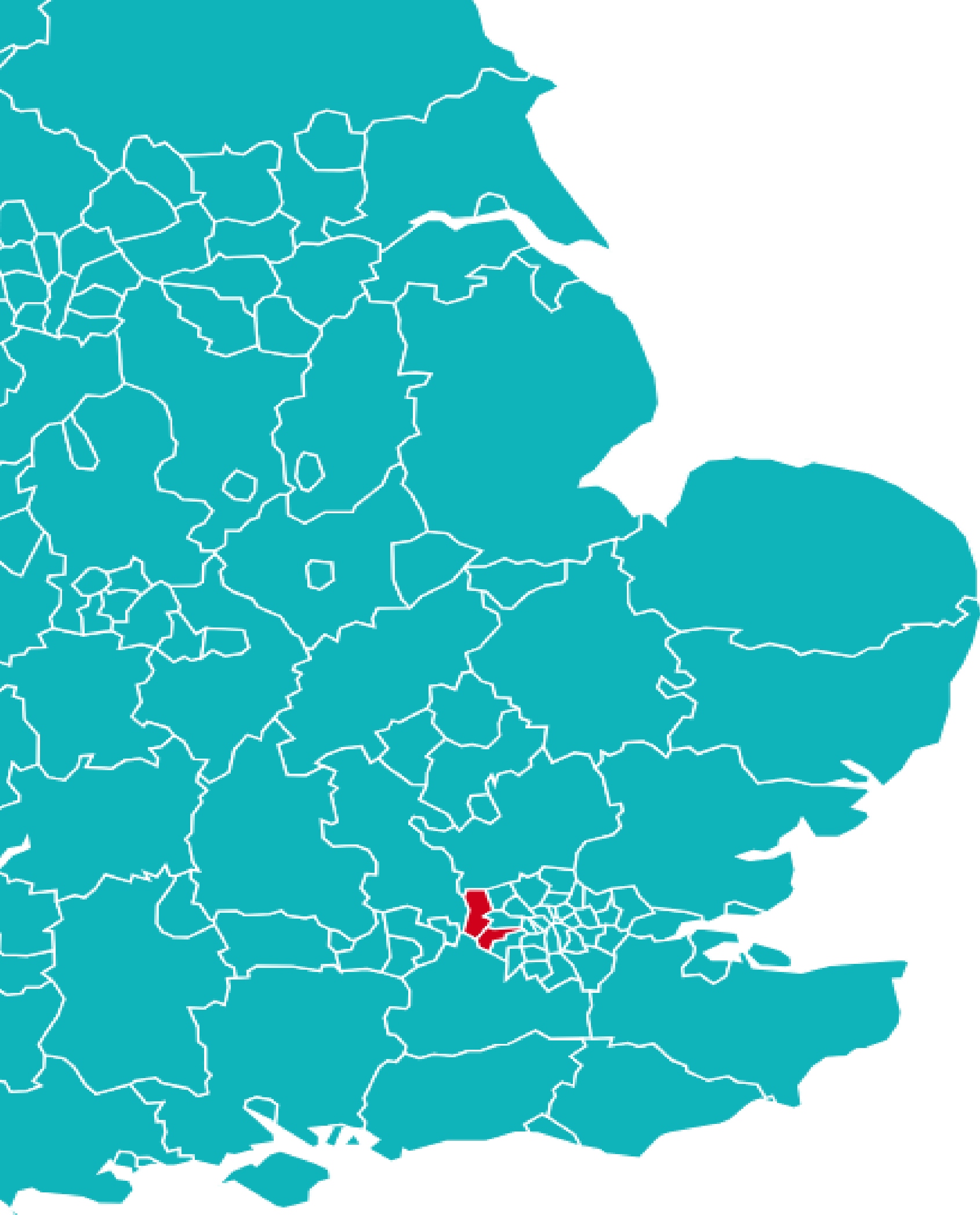


SYON MANOR COLLEGE



SYON MANOR
COLLEGE

**We are a high-quality learning and skills provider
specialising in supporting young people autism and
other special education needs.**



CAMPUS SITES



ISLEWORTH CAMPUS

Admissions:
Entry Level 2 +
ASC, ADHD, SEMH

Address: Syon Manor
College
390 London Road,
Isleworth, TW7 5AJ



VINE HOUSE & FARM CAMPUS

Horticulture ,
Engineering, Carpentry
Start IT skills
ASDAN
Mini Enterprise
Life Skills Challenges

Address: Vine House,
Harlington Road,
Uxbridge UB8 3HD

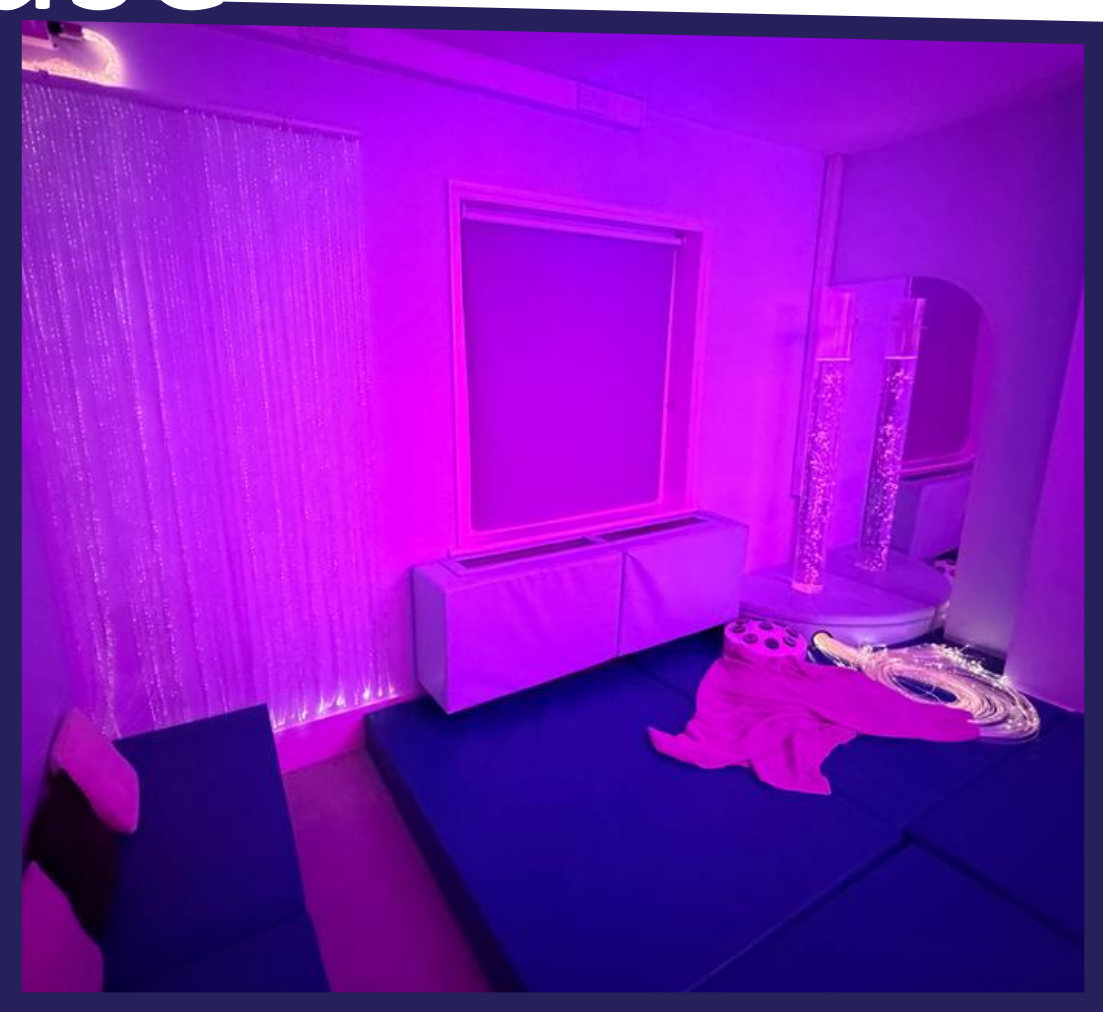


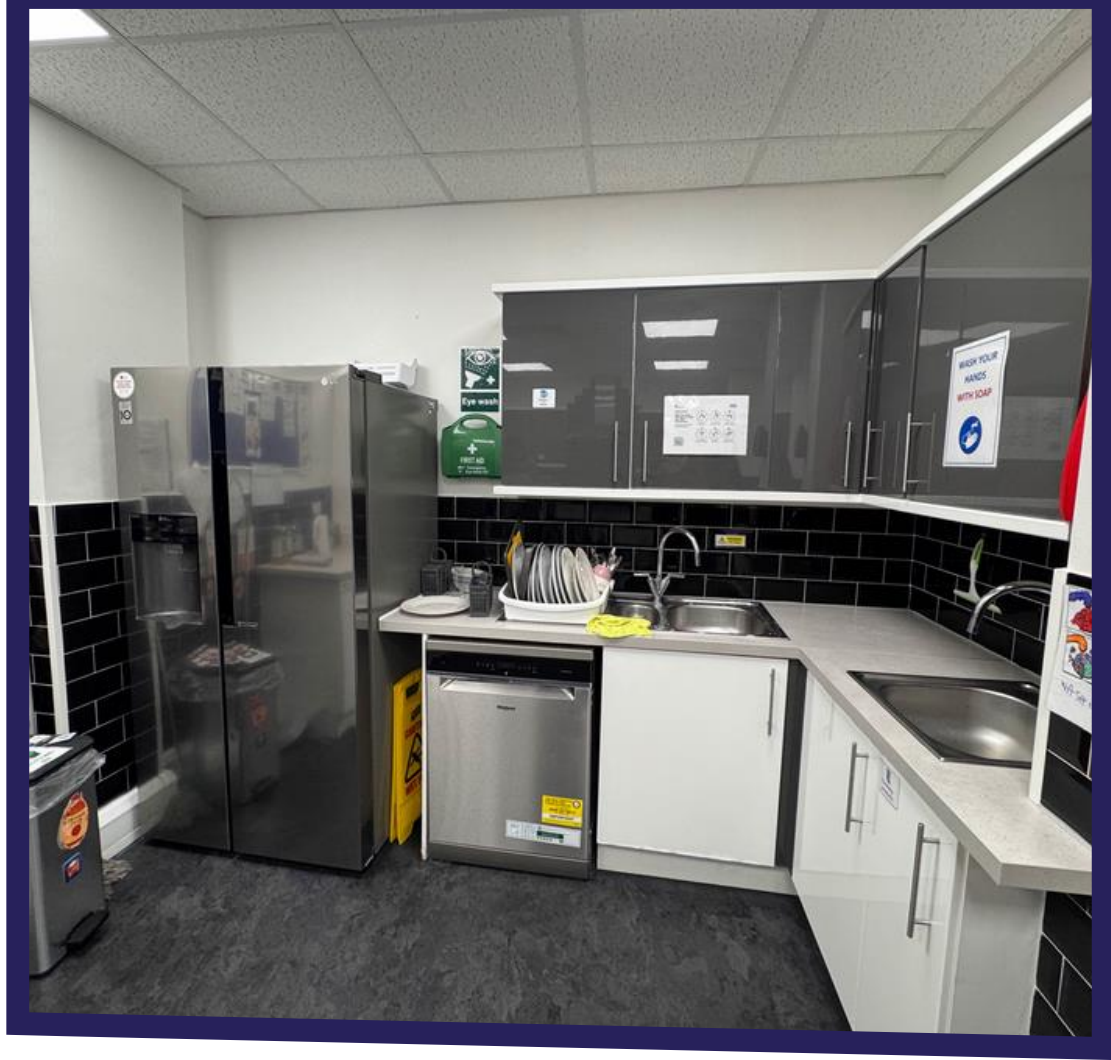
ASTON HOUSE CAMPUS

ASDAN – Personal Social
Development
Community Projects
Life Skills Challenges
Entry Level 1 + 2

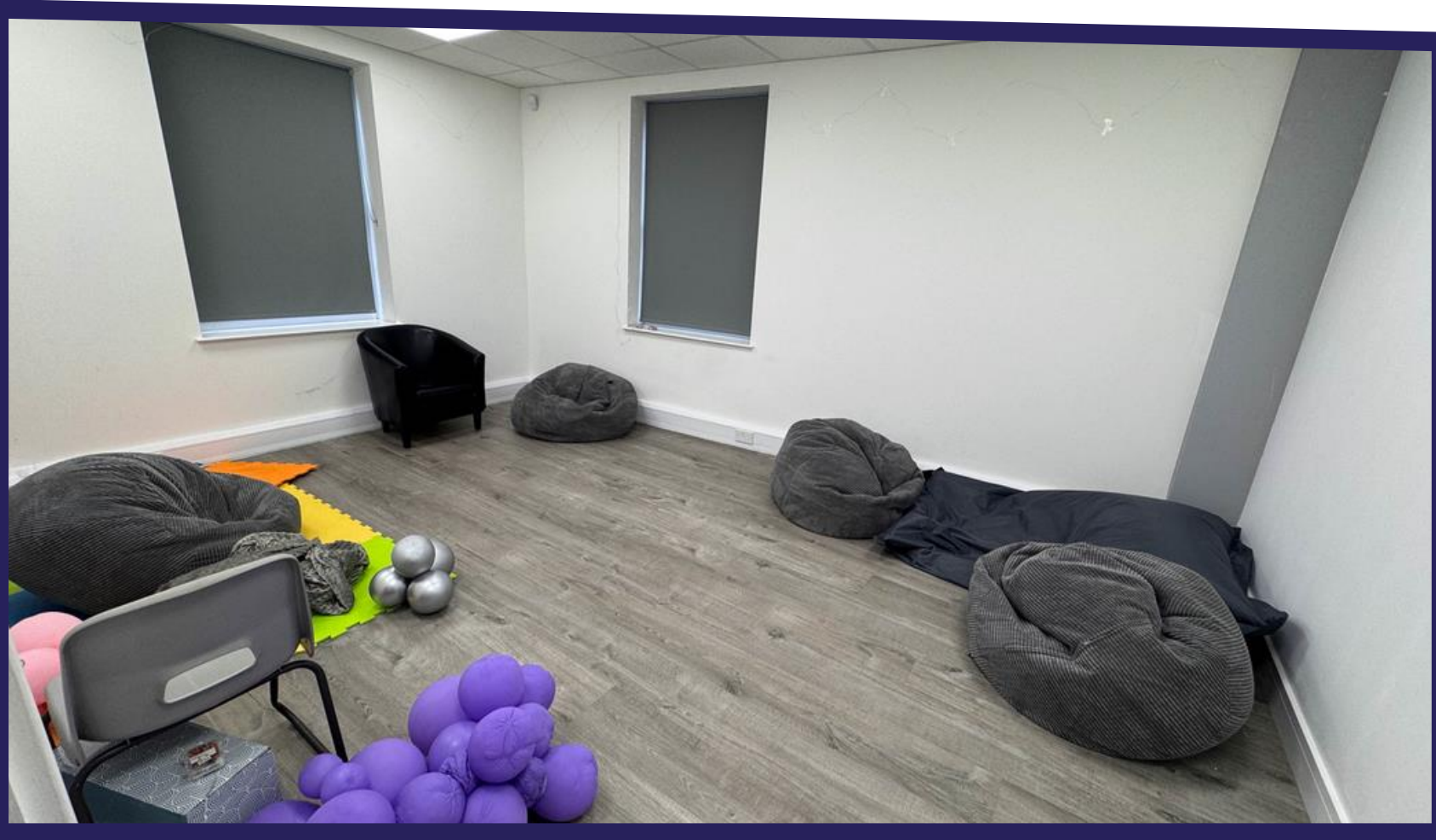
Address: Aston House,
Redford Way, Uxbridge
UB8 1SZ

Vine House
Campus





Aston House
Campus





SYON MANOR COLLEGE

**CURRICULUM PATHWAYS
AND OPPORTUNITIES**

Curriculum Pathways

Academic and Career Ready

- The Core and Career Preparation Pathway is designed for students who can engage with core subjects like Functional Skills and GCSEs, along with vocational courses.
- This pathway provides opportunities for work experience, helping students gain practical skills and prepare for future employment.
- In addition to academic and vocational training, it focuses on developing independent living skills to ensure students are ready for a successful transition to adulthood and can live as independently as possible.

Skills and Vocational Development

- The Skills and Vocational Development Pathway is tailored for students who benefit from a more practical, skills-based approach.
- This pathway emphasizes vocational qualifications and essential life skills, focusing on hands-on learning and everyday practical tasks.
- It includes training in independent living skills to prepare students for a more self-sufficient life as they move towards adulthood, ensuring they are equipped with the abilities needed for independence and work readiness.

Academic and Career Ready

Year 1 : Foundational learning

- ✓ Focus on academic knowledge with a small introduction to career and work related experiences
- ✓ 5 blocks of academic subjects : 1 block of work experience

Year 2 Development Year

- ✓ Strengthening academic knowledge while increasing exposure to career experiences in areal-world
- ✓ 4 blocks of academic subjects : 2blocks of work experience

Year 3 : Career-Focused Year

- ✓ Prepare students for transition to work or further education with strong emphasis of employability
- ✓ 3 blocks of academic subjects : 3 blocks of work experience



SYON MANOR
COLLEGE



SYON MANOR COLLEGE

Admissions:
Entry Level 2 +
ASC, ADHD, SEMH

Address: Syon Manor
College
390 London Road,
Isleworth, TW7 5AJ

Skills and Vocational Development

Year 1 Life Skills and Community Awareness



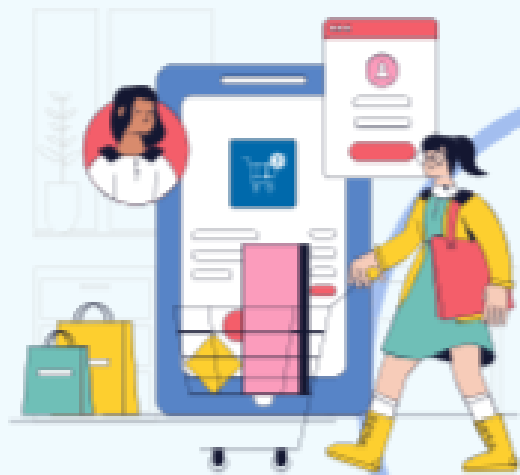
Focus mainly on life skills, self care and community integration , with some attention to practical literacy and numeracy



Year 2 Life Skills and Community Participation



Focus on increased personal self-care, life-skills and community engagement . Practical numeracy and literacy (e.g ; time management, shopping)



Year 3 Independent Living and Community Integration



Focus on independent living skills and full community engagement , and limited but targeted academic focus on practical literacy and numeracy



VINE HOUSE & FARM CAMPUS

Horticulture ,
Engineering, Carpentry
Start IT skills
ASDAN
Mini Enterprise
Life Skills Challenges

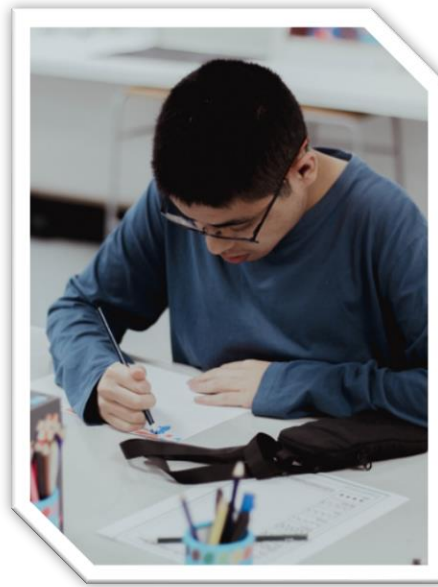
Address: Vine House,
Harlington Road,
Uxbridge UB8 3HD



ASTON HOUSE CAMPUS

ASDAN – Personal Social
Development
Community Projects
Life Skills Challenges
Entry Level 1 + 2

Address: Aston House,
Redford Way, Uxbridge
UB8 1SZ



To learn more about the qualification, click on the name of the course.

City & Lion Guilds

- [Entry Level 2 & 3 in English and Maths](#)
- [Functional Skills Level 1 & 2 in English and Maths](#)
- [Level 1 Certificate in Horticulture](#)
- [Level 1 & 2 in 2D and 3D Art and Design](#)
- [Entry Level 3 in Motor Vehicle Repair and Maintenance](#)
- [Level 1 in Hair and Beauty](#)





To learn more about the qualification, click on the name of the course.

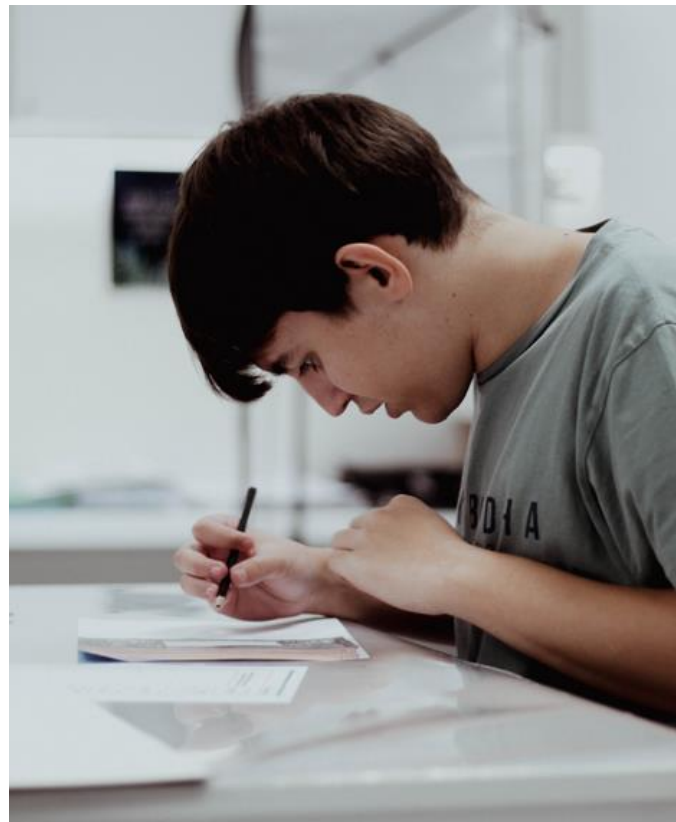
[Level 1 and Level 2 in Art and Design](#)

[Level 1 and Level 2 in Photography](#)



[NCFE Level 1 Award in Managing Your Money | NCFE](#)





To learn more about the qualification, click on the name of the course.

- [Functional Skills Entry Levels 1–3 in Maths and English](#)
- [Functional Skills at Level 1 and Level 2 in Maths and English](#)
- [Entry Level Certificates at Level 1 – 3 In Maths and English](#)



To learn more about the qualification, click on the name of the course.



- [BTEC Level 1 in Applied Science](#)
- [BTEC Level 1 in Hair and Beauty](#)
- [BTEC Level 1 and 2 in Workskills](#)
- [BTEC Level 1 and 2 in Business](#)
- [BTEC Level 1 and 2 in Sport](#)
- [BTEC Level 1 and 2 in Home Cooking Skills](#)
- [BTEC Level 3 in Health and Social Care](#)





To learn more about the qualification, click on the name of the course.

- [A Level in Physics](#)
- [A Level in Biology](#)
- [A Level in Math's](#)
- [GCSE in Psychology](#)
- [Unit Awards Scheme](#)

To learn more about the qualification, click on the name of the course.



Cambridge Assessment
International Education

[IGCSE in Accounting](#)



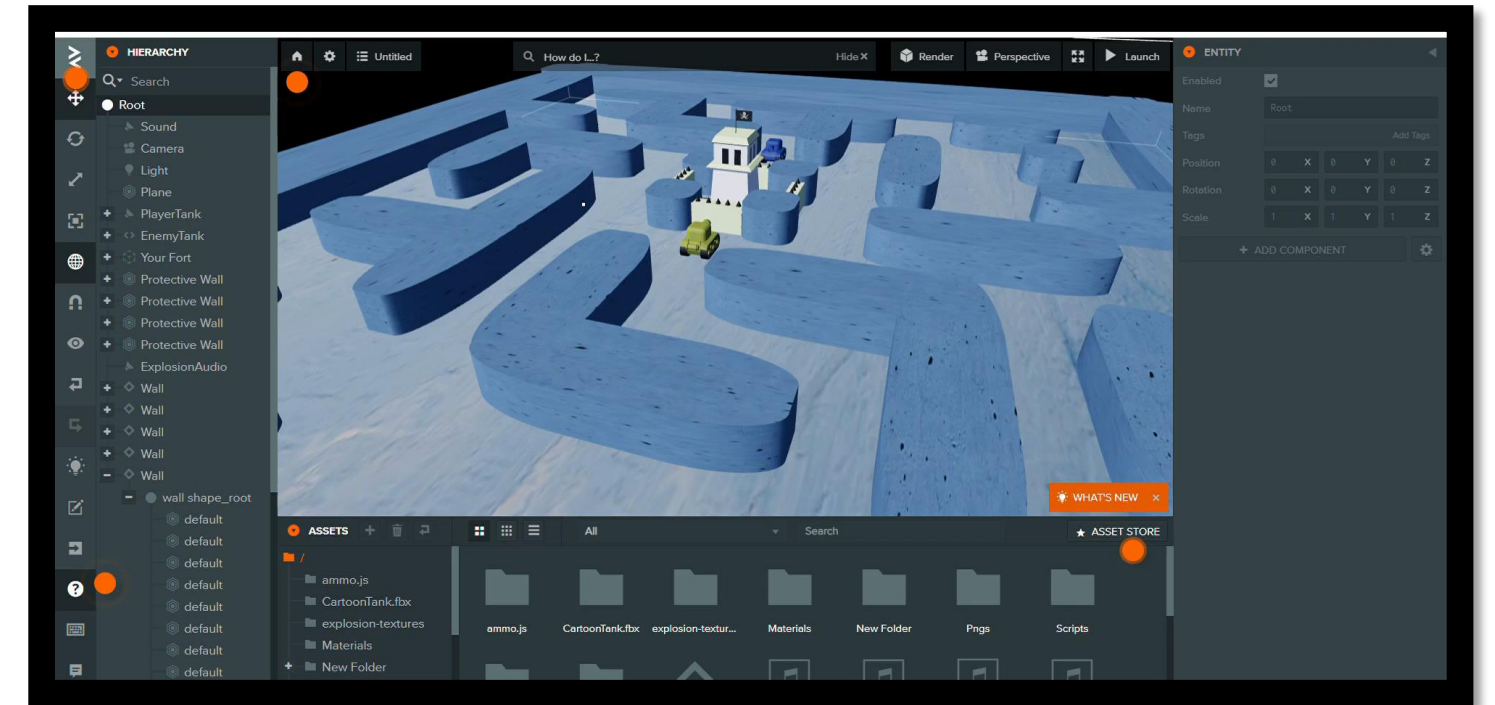
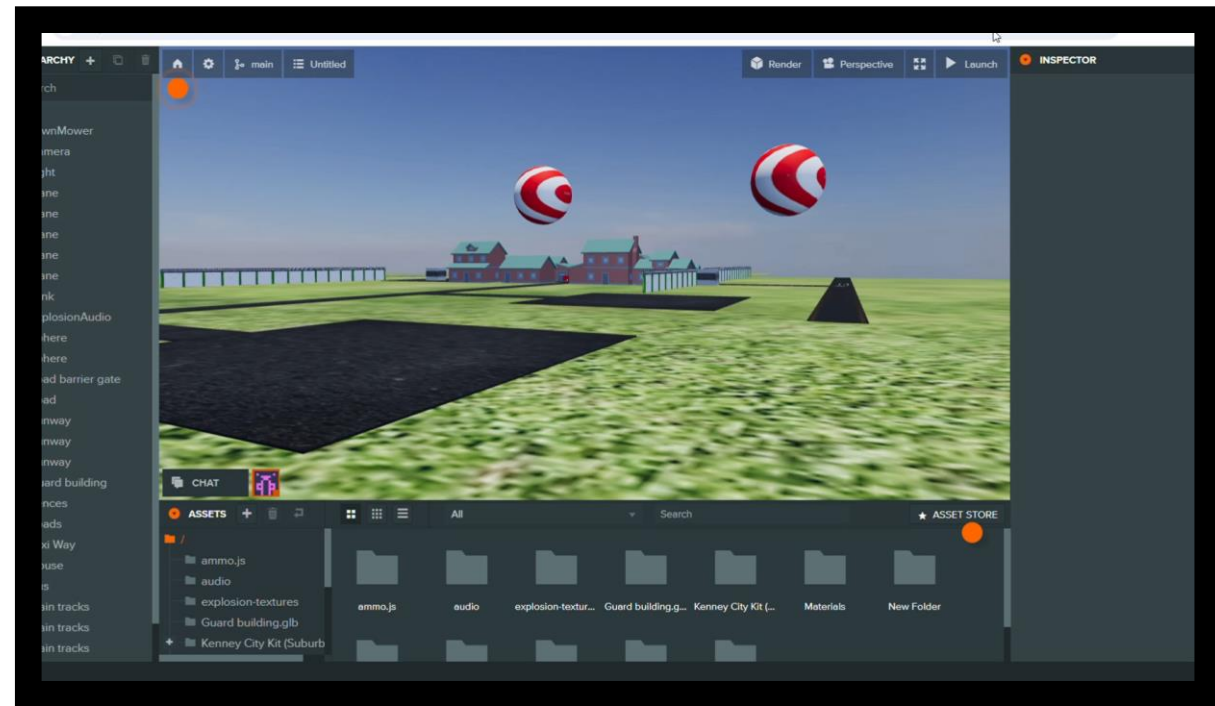
To learn more about the qualification, click on the name of the course.



- [Personal Progress](#)
- [Personal and Social Development](#)
- [LifeSkills Challenges](#)



To learn more about the qualification, click on the name of the course.



RSL

[Level 1 and Level 2 in Game Design](#)



•**Purpose** :A simply life-changing experience. The D of E is for the students to develop an opportunity to discover new interests and talents. This course allows the students to learn essential skills for life and work, as well as giving opportunities to experience new sports and skills. It then leads to a nationally recognized mark of achievement, which is highly respected by employers.

Grades : Physical, Skills, Volunteering and Expedition components.

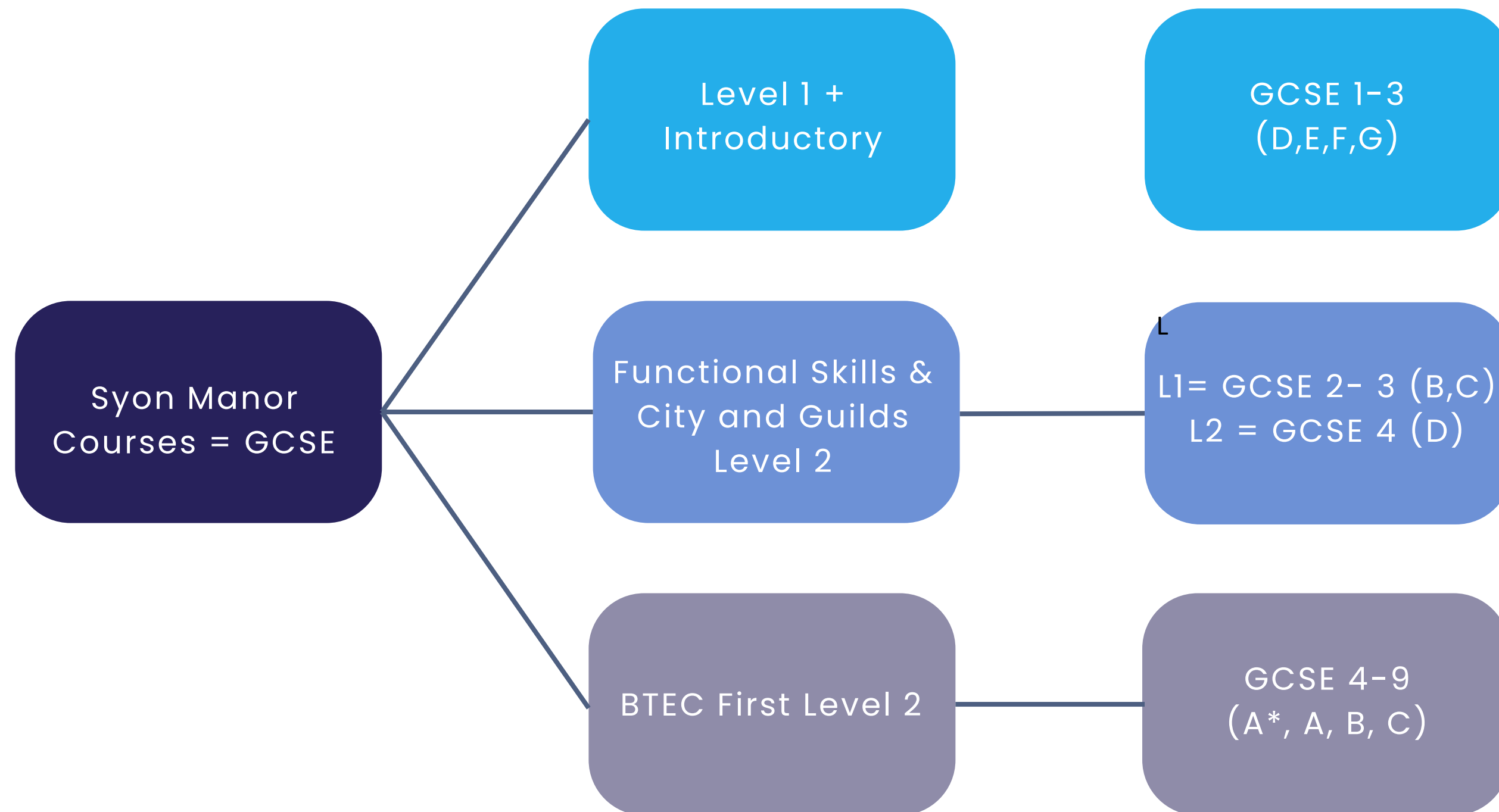
•**Duration** : Each component has a time frame. At least 1 hour of activity per week to be completed and evidenced.

•**Exam** : Expedition is the final assessment – Students will need to complete an overnight walking or cycling expedition in an unfamiliar setting and with at least 4 other peers.

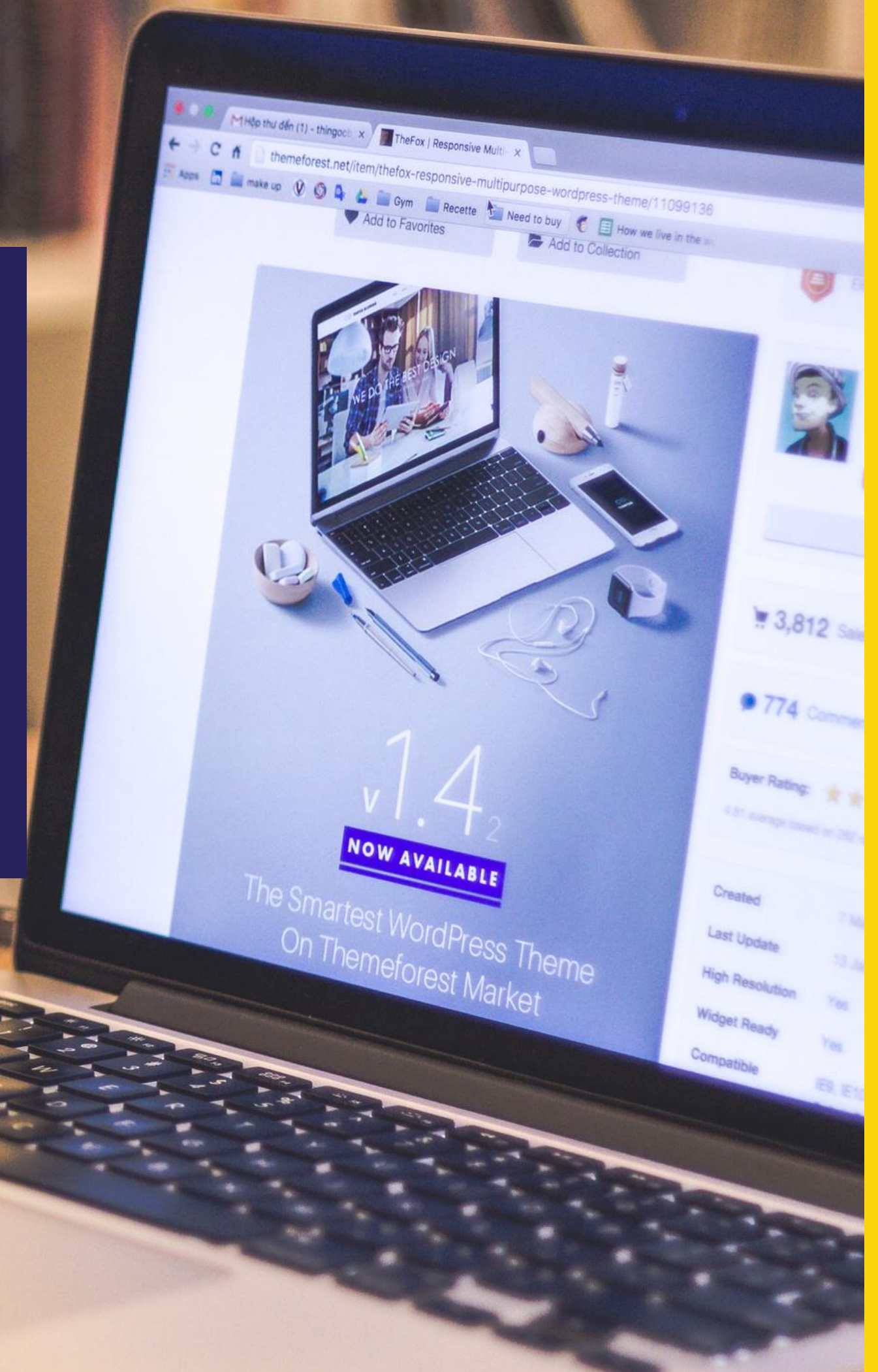


[Specification of the course :](#)





NEXT... **Pastoral Support and** **Therapies at Syon Manor** **College**



**Outcomes
First
Group.**

Pastoral Support and Therapies at Syon Manor College



PASTORAL – PERSON CENTRED APPROACH

We ensure each of our students are at the centre all of decisions that relate to their life. We work together with students to understand their desires, values, family situations, social circumstances and lifestyles to create a meaningful educational programme for them.

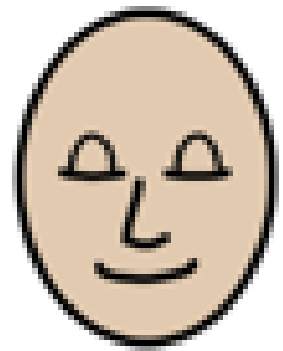


PASTORAL – PERSON CENTRED APPROACH



BEHAVIOUR

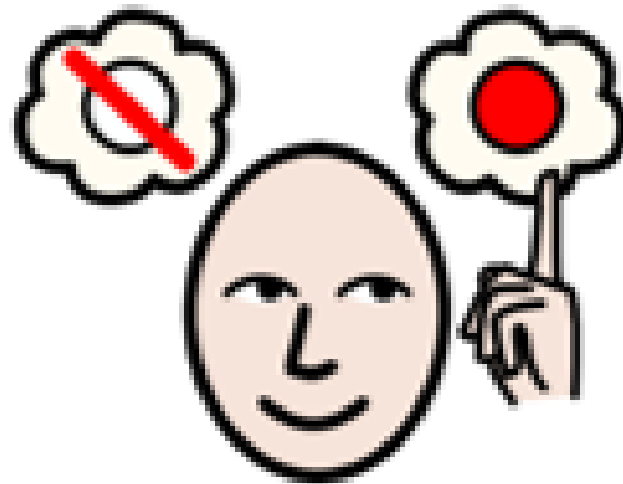
A **positive behaviour support approach** gives students a meaningful way to learn and generalise interaction and team building skills within the college and local community.



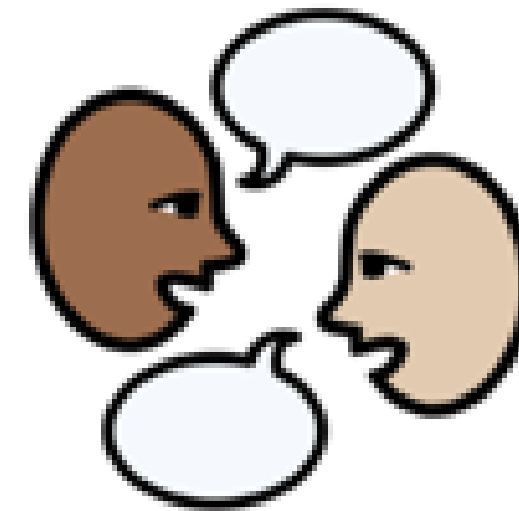
Learn regulation
skills



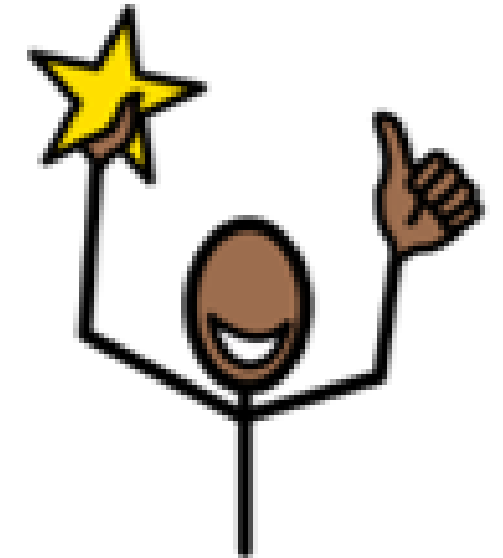
Consistency from
staff with
behaviours



Choices in
response to
behaviour



Life Space
Interview



Praise and
promoting
achievement

LIFESTYLE CHOICES

At Syon Manor College we promote **positive lifestyle choices** from healthy eating to how to spend free time.



Constructive, fun
free time activities



Meaningful,
healthy cooking



Personal, Social and
Health Education



Promote sensible
conversations of interest

INCLUSION

Each student at Syon Manor College has a right to **choice**, feel **supported** and live a **fulfilling life**.



Accessible Building



Consider Sensory Differences



Celebrate Differences



Speech and Language Therapists



Occupational Therapists

**Outcomes
First
Group.**

Clinical Team



Delivered by or in conjunction with OFG Clinical Services



WE SUPPORT STUDENTS TO...



- access learning



- increase independence



- improve quality of life and wellbeing.



LOOKING BEYOND THE OBVIOUS.
WHAT LIES BENEATH THE SURFACE?

‘Every behavior is a
communication.’

WHAT DOES THE CLINICAL SERVICE OFFER?

- Work with pupils, teaching staff and families to create a shared understanding of the pupil's strengths and areas for development
- Plan interventions to build on the pupil's strengths and develop new skills and independence
- Carry out assessments.
- Set and review goals

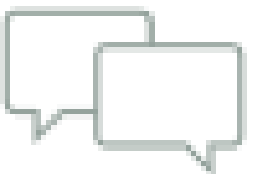
WHO IS IN THE CLINICAL TEAM?

We are a **multi-disciplinary team** made up of:

Occupational Therapists

Speech and Language Therapists

Cognitive and Social-Emotional (CSE) Practitioners



We work together with you to see pupils in a holistic way

We have shared areas of skills and knowledge and unique areas of expertise.

In depth assessment
and planning of
intervention for highly
complex need

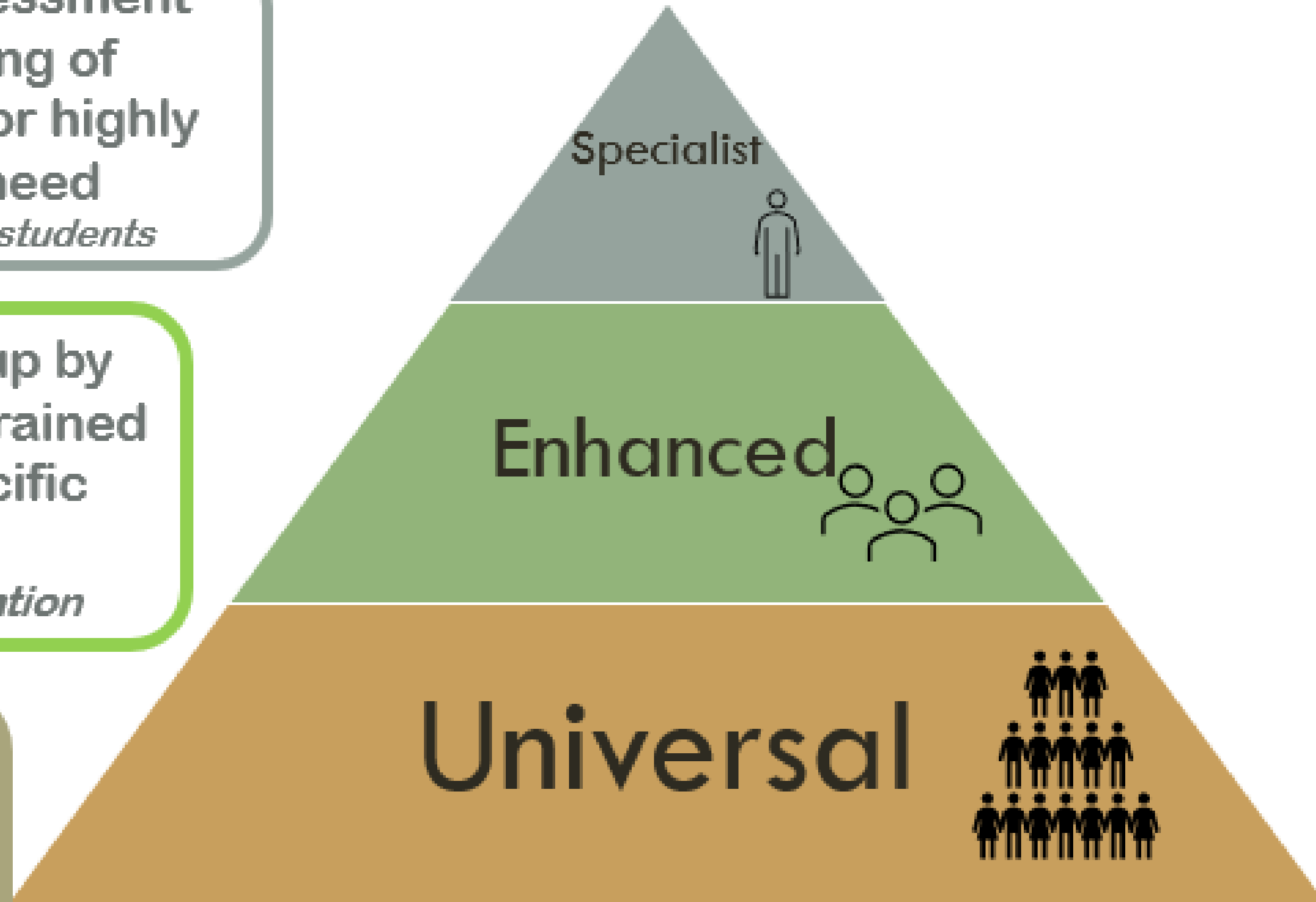
Always for new students

Weekly groups set up by
OT/SaLT and run by trained
staff to target specific
skills

e.g. social communication

Regular training for staff
on school wide
strategies and
approaches

e.g. using symbol software





EXAMPLES



Weekly groups run by SaLT or trained member of staff focusing on developing their social communication skills.

Staff training on the use of visuals

Contributions to Annual Reviews

Supporting curriculum differentiation

Identifying student who may benefit from AAC

EMPLOYABILITY AND CAREERS





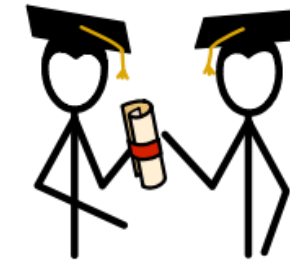
Further Qualifications



Helping people

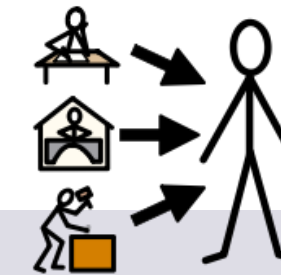


Independance

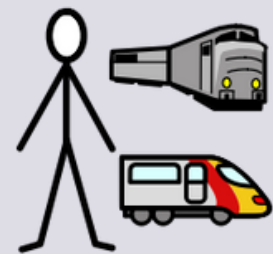


Universit
y

PREPARING FOR LIFE AFTER COLLEGE



Jobs



Work Experience

Some ideas from our students....



Money



Apprenticeship



Buying my own food

Step 1 – Coffee and Tea Making in College



Basic skills and knowledge are in bedded daily.



Ambition

The support of visual aids, as well as verbal prompts are promoted to increase confidence in the early stages.



Skills learnt are practiced daily, they are then applied in a real world setting with the continued support of staff.

Step 2 – Work Experience supported by staff



The Rising Sun



Opportunity



An opportunity to reduce adult support to build independence with individual tasks.

Step 3 – Independent Work Placement



- Effective communication skills
- Customer service Skills
- Teamwork
- Ability to work independently
- Work well under pressure
- Confidence/self belief
- Money Management
- Work with my hands.
- The ability to self-regulate in a professional environment.



Success



Students are offered work placement opportunities that allow them to apply and transfer the skills they have learnt to real world settings.

Supporting Our Local Community Volunteering



The training and hands – on experience gained while volunteering is second to none and can help students learn new skills and build on existing ones.

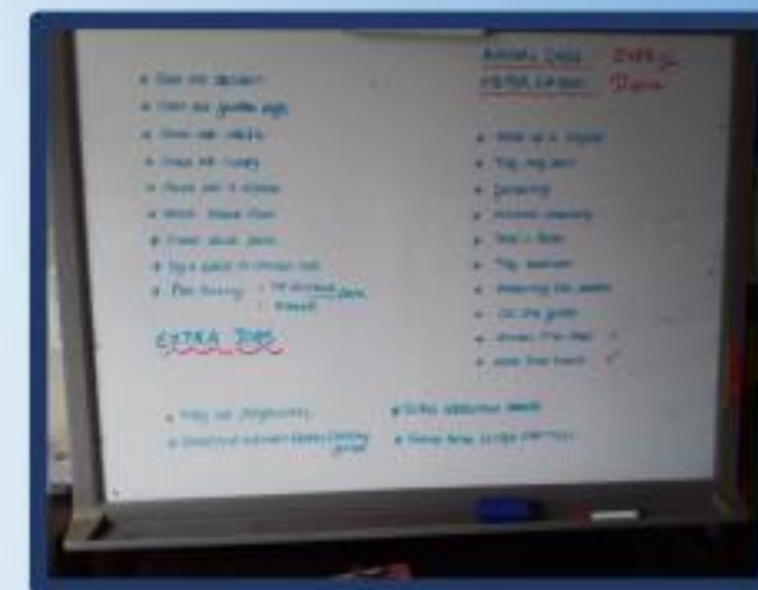
Volunteering allows our students to develop soft skills which are essential in the next phase of their life, from study to work. Additionally teaching the importance of supporting others and contributing to the local community



The Open Kitchen



ST Mary's Church



Heathrow Farm





DAY TRIPS – Future Career/Education Focused

A college day trip focused on future careers and education is essential for students as it provides them with first-hand exposure to various academic environments and professional opportunities. Such experiences can inspire our students to set goals for their future, motivate them to pursue higher education, and ultimately help them make informed decisions about their career paths. By bridging the gap between education and the real- world applications, these trips empower our students to take charge of their futures with confidence.

**Jobs
fair**



1st	2nd	3rd	4th
Rules	to the	College	College
		News	Values



CV Building

Students have learned how to showcase their skills, experiences and achievements to potential employers. Students designed their CVs, highlighting their unique strengths, preparing them for future opportunities.



Interview Practice

Students have the opportunity to attend interviews as part of the application process for college jobs. A chance for students to enhance their communication, problem solving and interpersonal skills.



Profiles



Lunch Clubs

 Monday	 	
 Tuesday	 	
 Wednesday	 	
 Thursday	 	
 Friday	 	

Writing Cover Letters

Students practice writing cover letters as part of their job application preparation. These exercises aim to refine their ability to articulate their experiences, aspirations, as well as future qualifications to prospective employers.

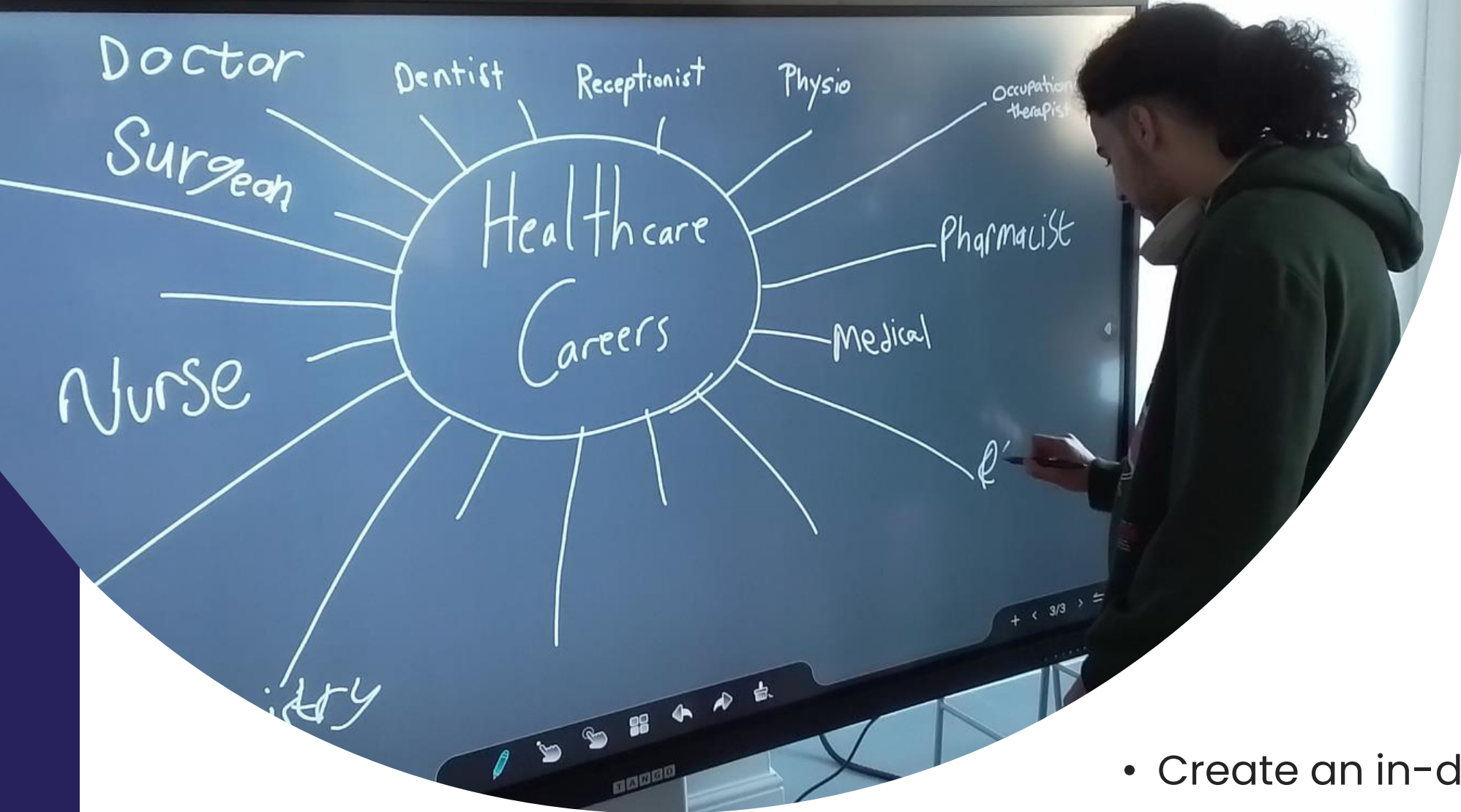
Our Vision,
Our Mission,
Our Promise

Vocational Skill Building

WHY GET OUR YOUNG PEOPLE THINKING ABOUT EMPLOYMENT AND CAREERS?

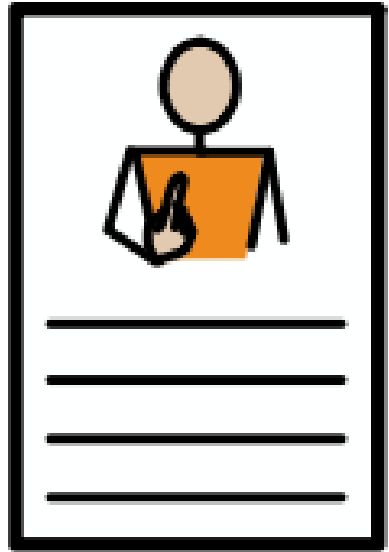
- Improves self-esteem
- Helps develop social relationships
- Builds confidence
- Learn the value of working
- Encourages independence
- Valued member of society
- Feeling of purpose
- Closing the [Autism Employment Gap](#)





WHAT WE PLAN TO ACHIEVE

- Create an in-depth Careers Folders and set individual goals
- Give students an understanding of their own employment options including information on Apprenticeships, Supported Employment, full and part time jobs
- Prepare them for sustainable long and short term employment
- Create a CVs in varying forms including video interviews can be used to apply for jobs
- Build confidence so they can make educated choices about their future
- Assist them with gaining valuable work experience
- Successfully implement the Gatsby Benchmarks into our careers curriculum



TO PREPARE STUDENTS FOR EMPLOYMENT WE ARE...

- Developing a stable careers program that can be adapted each year
- Work Experience within the community and within college
- Attending Careers Fairs
- Duke of Edinburgh Award
- Employment skills projects
- Subject specific employment information taught within the curriculum
- CV Building and interview preparation
- National Careers and Apprenticeship week
- Money Management Workshop from Barclays
- Neurodiversity awareness training for employers
- Our Students will also have an appointment with a Level 6 Careers coach



If you have any questions,
you can contact us by :

By email :

Regarding the curriculum offer :

Mateusz.Szlezak@syonmanorcollege.co.uk

General enquiries :

syonmanorenquiries@syonmanorcollege.co.uk



SYON MANOR
COLLEGE